



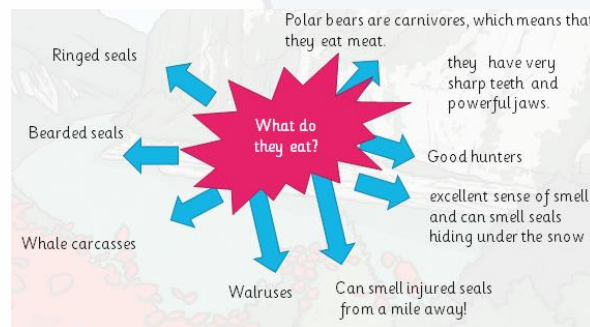
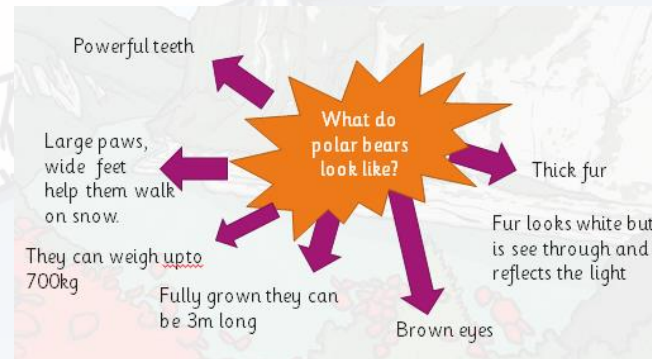
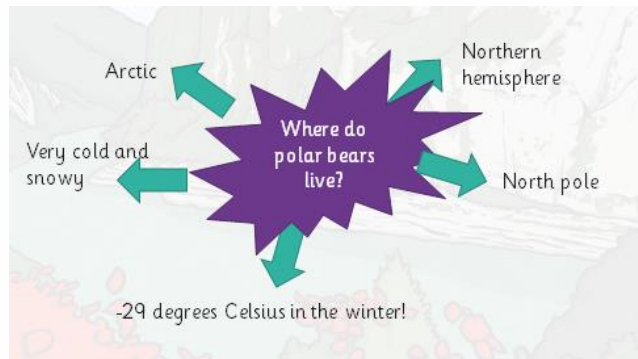
# Polar bears

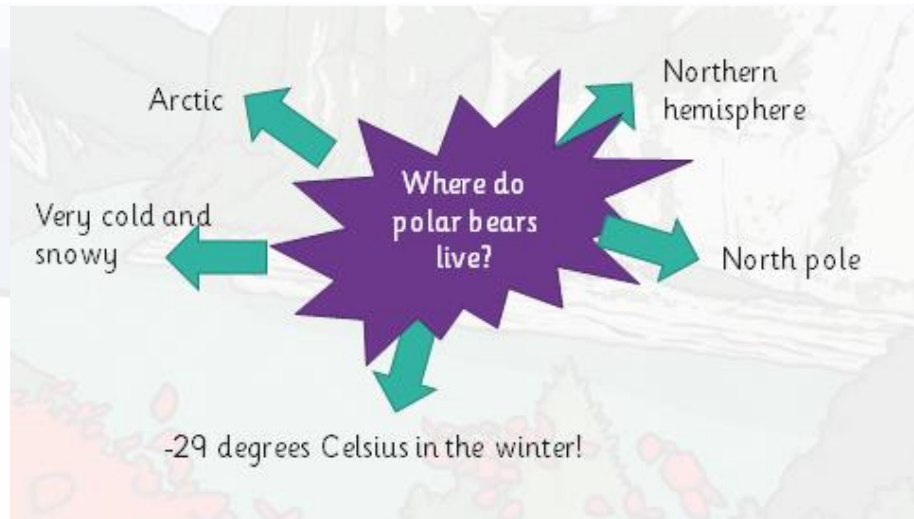
*LO: To write information paragraphs about polar bears.*

# Information text

Today, we are going to write our own information text on polar bears. Use the information which you have gathered last lesson in your mind maps to help you write full sentences.

The questions in the middle of your mind map can be your subheadings.



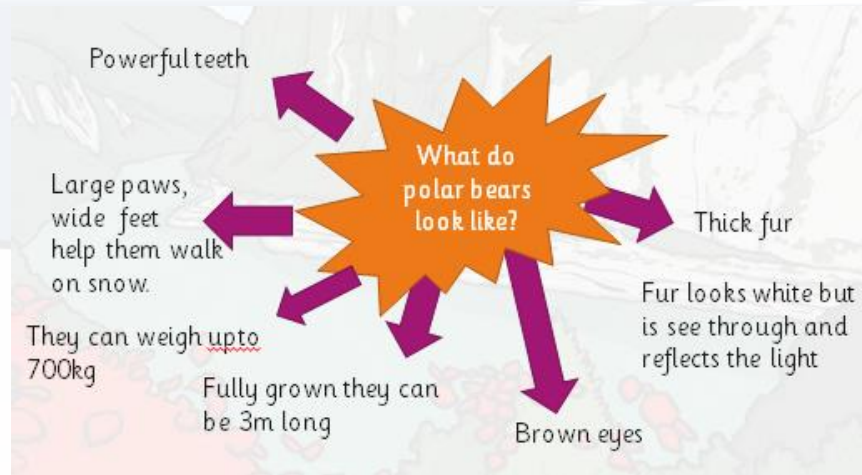


Using your mind map now, you should create sentences which link together and share all of the information. This is how Mrs Hughes has done it:

## Where do polar bears live?

Polar bears live in the Arctic which is found in the Northern hemisphere. Sometimes we call this place the North pole. In the Arctic, it is very cold and snowy and it is completely covered in ice. In the winter time it can get as cold as -29 degrees celcius!

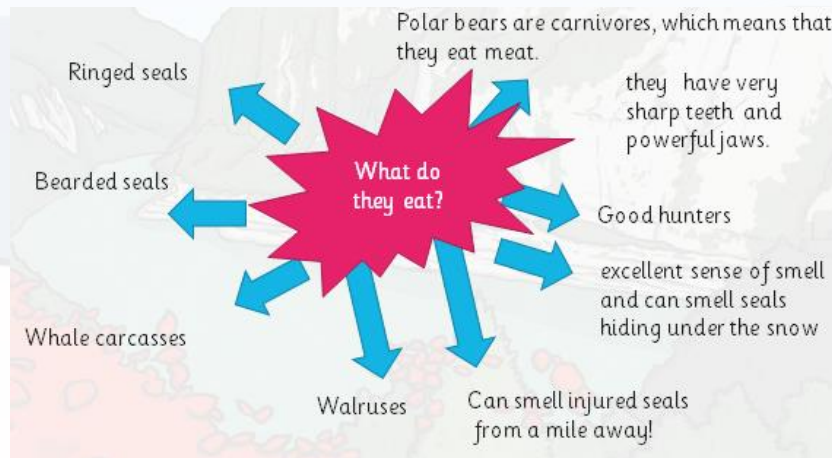




Using your second mind map now, you should create sentences that link the ideas of your second mind map.

# What do polar bears look like?

Polar bears are large, powerful bears. When fully grown, they can be up to 3 metres long and can weigh up to 700kg. They have thick fur which appears white but it is actually see through and reflects the light. This means that in the ice they are well camouflaged. They are well adapted to life in the Arctic. They have powerful teeth, fatty layers of skin, lots of thick fur and large paws. Their large paws help them to walk in the snow.



Using your third mind map now, you should create sentences that link the ideas of your second mind map.

## What do polar bears eat?

Polar bears are carnivores, which means that they eat meat. They are very good hunters as they have sharp teeth and powerful jaws. They also have an excellent sense of smell and can smell seals hiding under the snow. They can even smell injured seals from miles away. Polar bears eat ringed seals, bearded seals, walruses and whale carcasses.

# Next:

Check your work for the following things:

- Capital letters and full stops.
- Subheadings with questions and question marks
- Facts only!
- Different openers
- Commas to list

When you are happy hand your draft into Mrs Hughes, once it has been checked you can move onto your final draft! =)