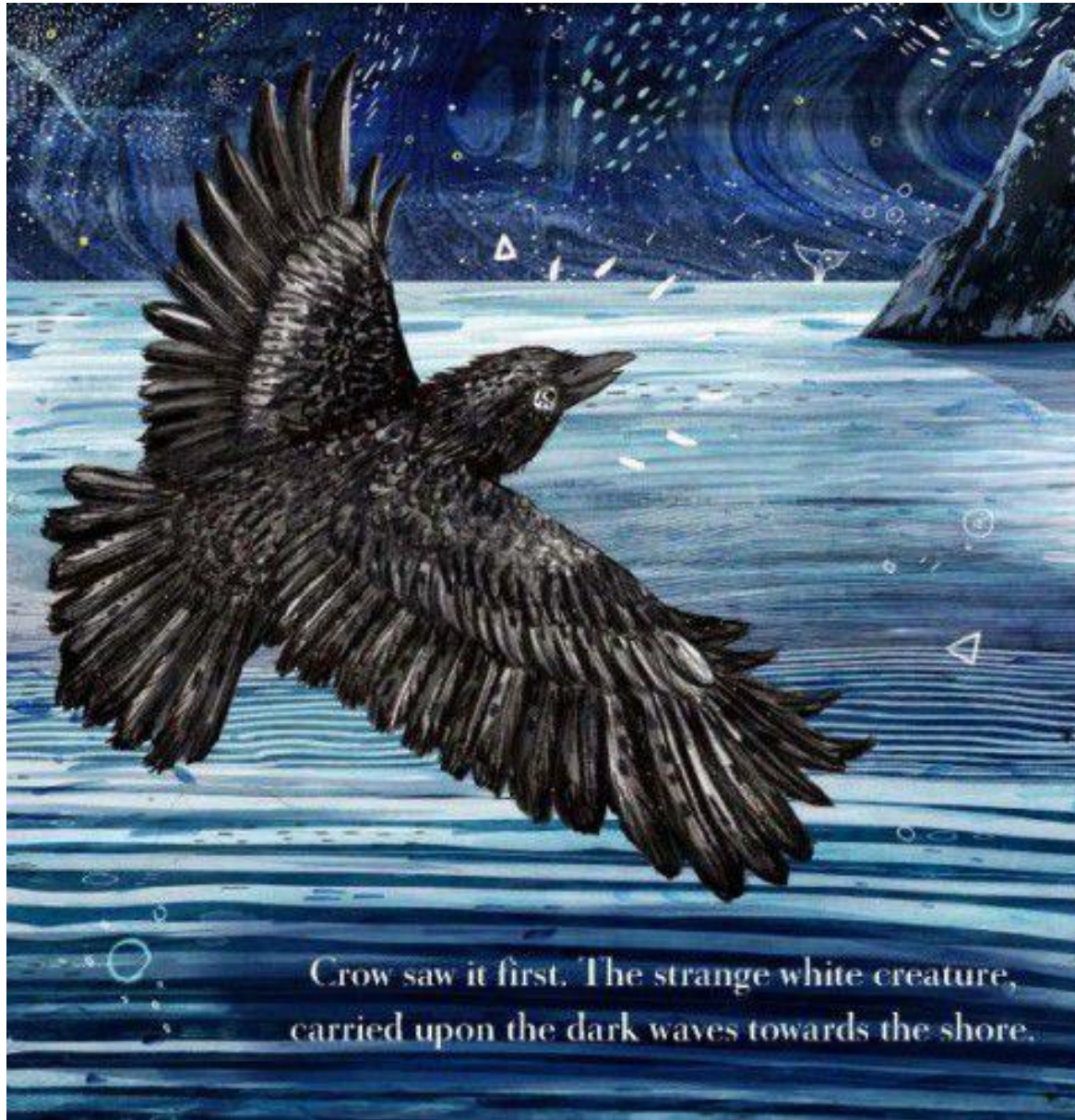




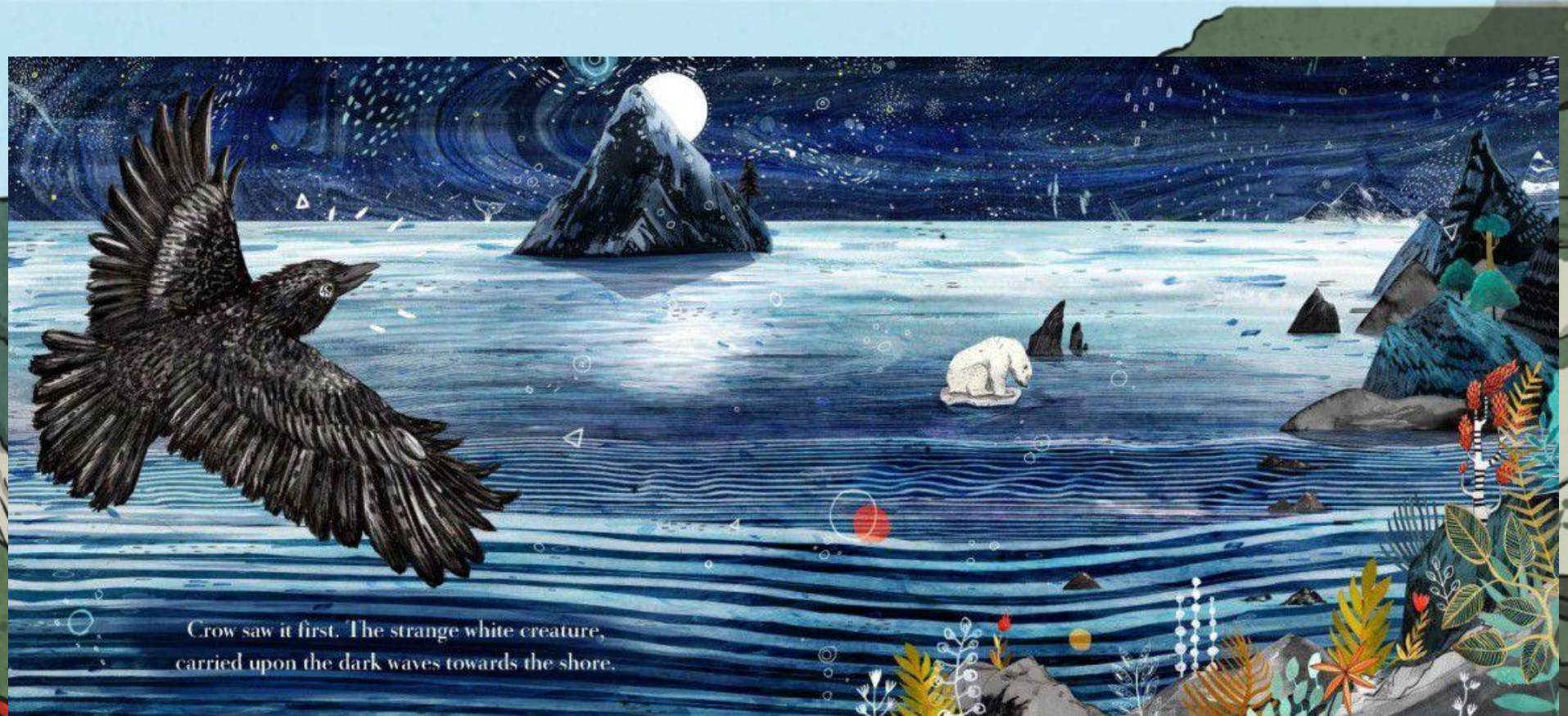
Leaf

by Sandra Dieckmann

- I can talk about the authors use of vocabulary
- I can magpie and develop vocabulary
- I can share my ideas about characters



Crow saw it first. The strange white creature,
carried upon the dark waves towards the shore.



Crow saw it first. The strange white creature,
carried upon the dark waves towards the shore.

What can you see? What do you notice? Does anything puzzle you? Does it remind them of anything you've seen before?

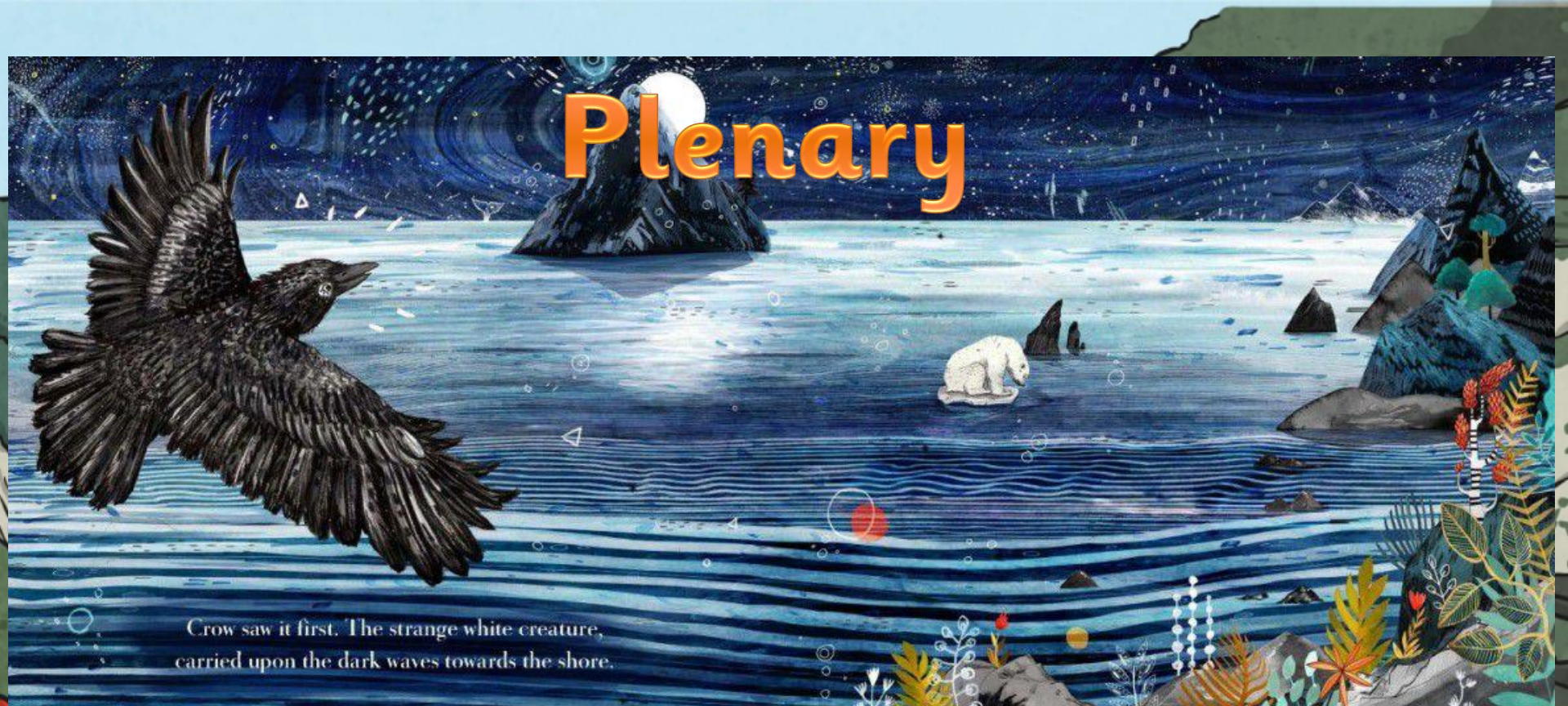
Draw your own version of this picture on some plain paper then add some notes around your image. (Use the questions above to help you.)



Crow saw it first. The **strange** white **creature**,
carried upon the **dark** waters towards the shore.

Lets consider some of the decisions that the author/illustrator has made in producing this first image. Which character is the most important on the page? Which is the most powerful character? Are they the same? What do the size and posture of the two creatures tell you about their relationship and emotions? What words might they use to describe the polar bear or the crow? What makes them think that? Why might the artist have used these colours? How do they make you feel? Where have the animals come from and where are they going?

Plenary



Crow saw it first. The strange white creature, carried upon the dark waves towards the shore.

Crow saw it first. The **strange** white **creature**, carried upon the **dark** waters towards the shore.

Why do you think that the author has used the words strange and creature to describe the character? What clues might that give us about the rest of the book?