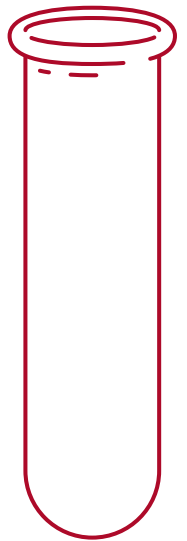
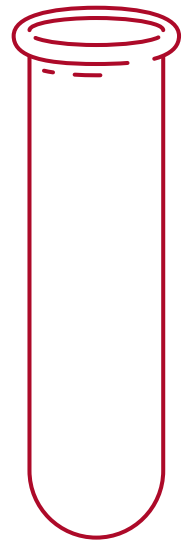
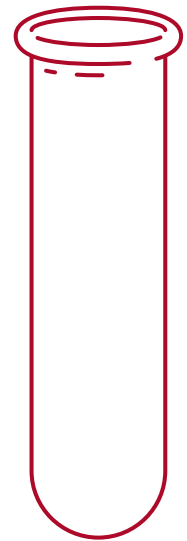
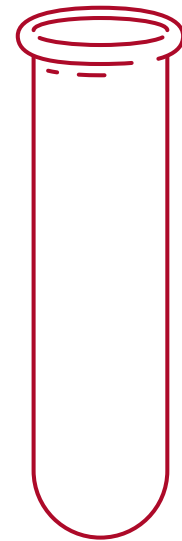
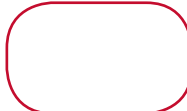
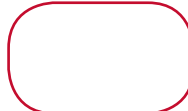
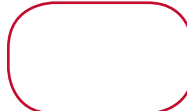



# All about blood: questions

## 1 Can you show the quantities?

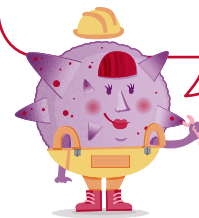
Choose a colour for each component of the blood and colour in the test tube to show their percentage in healthy blood.

			
			
% platelets	% white blood cells	% red blood cells	% plasma

## 2 What is our function?

Complete these sentences to explain the function of each part of the blood.

My job is to...



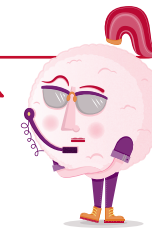
Platelet

I am important because...



Plasma

Without me...



White blood cell

I help you by...

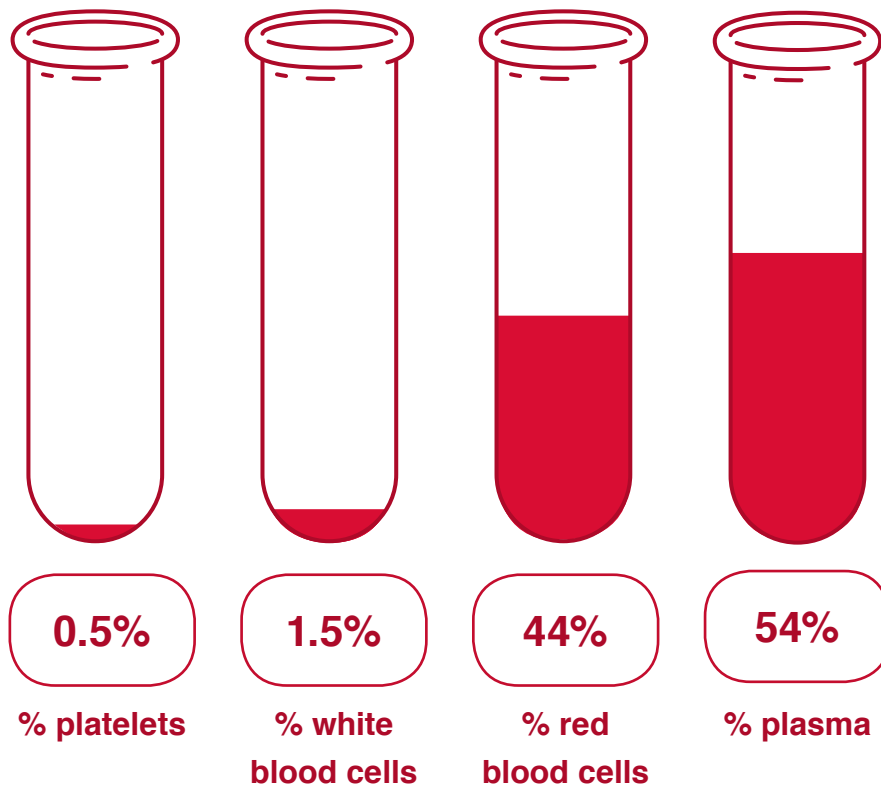


Red blood cell




# All about blood: answers

**1 Answers:** These answers provide a rough guide of where pupils should have shaded their percentages:




**2 Answers:** See below:

**My job is to stop you bleeding.**



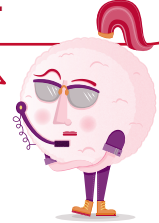
Platelet

**I am important because I transport the cells and important substances around the body.**




Plasma

**Without me you would get lots of illness or disease and would die quickly.**



White blood cell

**I help you by delivering oxygen and removing waste.**



Red blood cell