

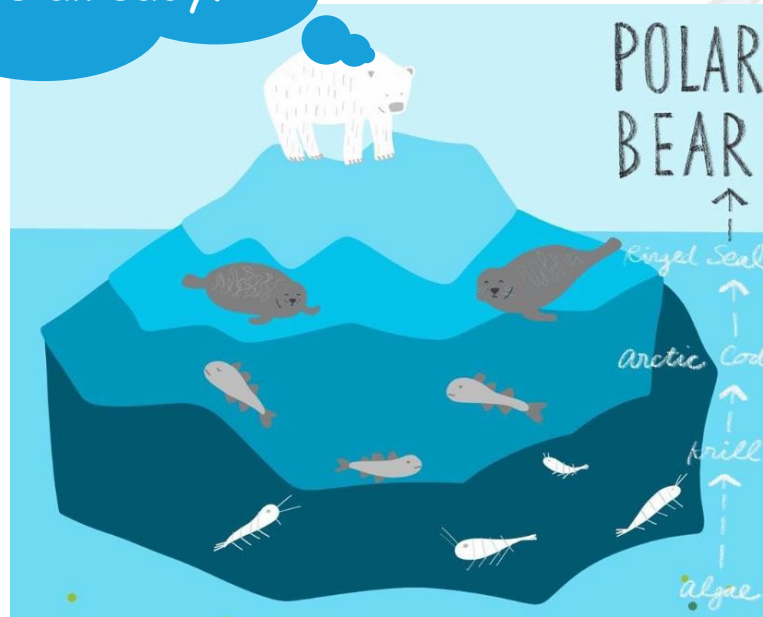


Polar bears

LO: Using commas to list

Starter

What can you remember about polar bears already?



Using Commas in Lists

Commas are used **between** items in a list.

- 1) Put a comma after every word in the list except the last one.
- 2) Put an '**and**' or an '**or**' between the last two words.

I didn't know whether to laugh, cry **or** scream.
The monster was gigantic, hideous **and** smelly.



Some of Mrs Hughes' examples:

Polar bears are large, tall and strong bears.

To adapt to the cold they have thick fur, fat layers and large paws.

Polar bears have good vision, powerful arms and a strong sense of smell.

Using Commas in Lists

Commas are used **between** items in a list.

- 1) Put a comma after every word in the list except the last one.
- 2) Put an '**and**' or an '**or**' between the last two words.

I didn't know whether to laugh, cry **or** scream.
The monster was gigantic, hideous **and** smelly.



Task 1 : Copy down these sentences and add the commas!

Fix it sentences: Where should the commas go?

They hunt fish seals and other creatures smelling them through the ice!

Polar bears have thick white fur large paws and dark, brown eyes.

Using Commas in Lists

Commas are used **between** items in a list.

- 1) Put a comma after every word in the list except the last one.
- 2) Put an '**and**' or an '**or**' between the last two words.

I didn't know whether to laugh, cry **or** scream.
The monster was gigantic, hideous **and** smelly.



Task 2 :

Can you create some of your own sentences using the information you have learned about polar bears?

Polar bears use their large, powerful paws to swim through the water.

They eat ringed seals, bearded seals, walruses and even whale carcasses.

They have an excellent sense of smell, sharp teeth and powerful jaws.